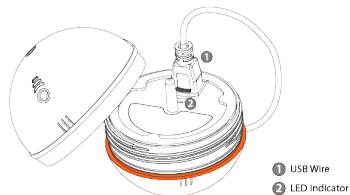




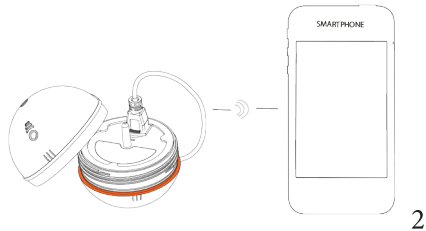
QUICK GUIDE

FEW STEPS TO HELP YOU GET STARTED

- 1. Charge the device**
Charge Deeper - Smart Fishfinder. Green light indicates the device is fully charged.
More information (User manual. 2.1. Opening and Charging).

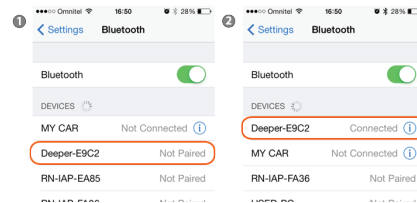


- 2. Pair the device**
Turn on Bluetooth on your smartphone and pair it with the available Deeper.
More information (User manual. 2.3. Pairing and Connecting).

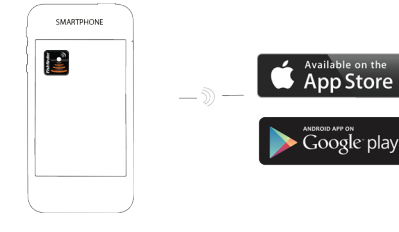


2

- 3. Connect to the device (iOS only)**
iOS users (only) have to connect to the device after it has been paired with the smartphone or tablet.
More information (User manual. 2.3. Pairing and Connecting).

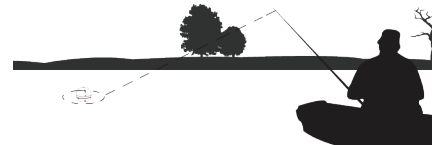


- 4. Download application**
Download app from App Store or Google Play.
More information (User manual. 2.2. Installing the Application).



3

- 5. Cast Deeper in to the water**
Launch the application on your smartphone or tablet and start using the device.
More information (User manual. 2.4. Fishfinding).



Deeper - Smart Fishfinder does not work in small and narrow artificial water tanks like buckets or fish aquariums. Please do not use it there.

Need more help?

Tutorials explaining all the features of Deeper - Smart Fishfinder are available inside our mobile application or printed user manual provided within the product box.

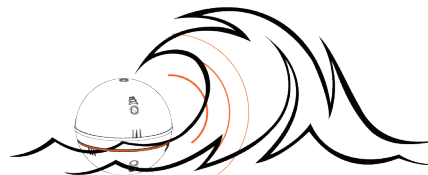
www.buydeeper.com

4

BLUETOOTH RANGE HELPFULL INFORMATION

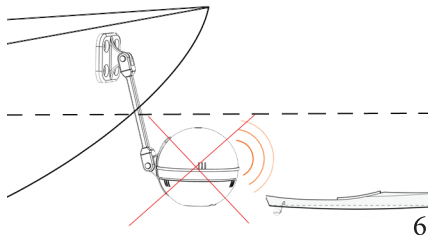
1. Weather conditions

Bluetooth range might depend on weather conditions. In a stormy day water waves might block Bluetooth signal temporally.



2. Do not submerge the device

Bluetooth signal cannot penetrate the water. When using any kind of mounting systems, make sure the device is not submerged.



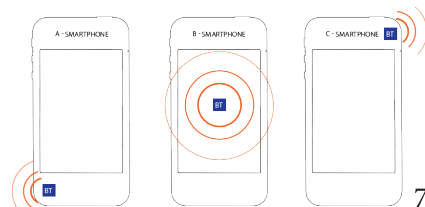
3. Different obstacles

Please make sure there are no major obstacles blocking the signal made from steel, reinforced concrete or any other material which could block Bluetooth signal.



4. Bluetooth module position

Different smartphone models has different locations where the Bluetooth modules are placed at. Depending on the location of the Bluetooth module inside your smartphone differs beam direction.



Smartphone holding position

Because of the different Bluetooth beam direction on different smartphone models, Bluetooth range might vary slightly. Try to find the best holding position of your smartphone or tablet to reach best available Bluetooth signal strength as it is shown in the pictures below.

