

ACTIVE MARITIME HEMI ONMI-DIRECTIONAL ANTENNA HOA3-159L-ACT/1409

PROVISIONAL SPECIFICATION



ELECTRICAL

FREQUENCY:	1.525 - 1.6605 GHz
GAIN:	2.0 dBiC Nominal
POLARISATION:	LHC (Sat port), RHC (GPS port)
BEAMWIDTH:	360° (Az) x 180° (EI)
AXIAL RATIO:	1.5 dB Approx
VSWR:	1.5:1
OPERATING VOLTAGES:	12 V (Sat), 5 V (GPS)
CABLE INSERTION LOSS:	10 dB
SYSTEM G/T	-24 dB/K Worst case anywhere more than 5° above horizon

MECHANICAL

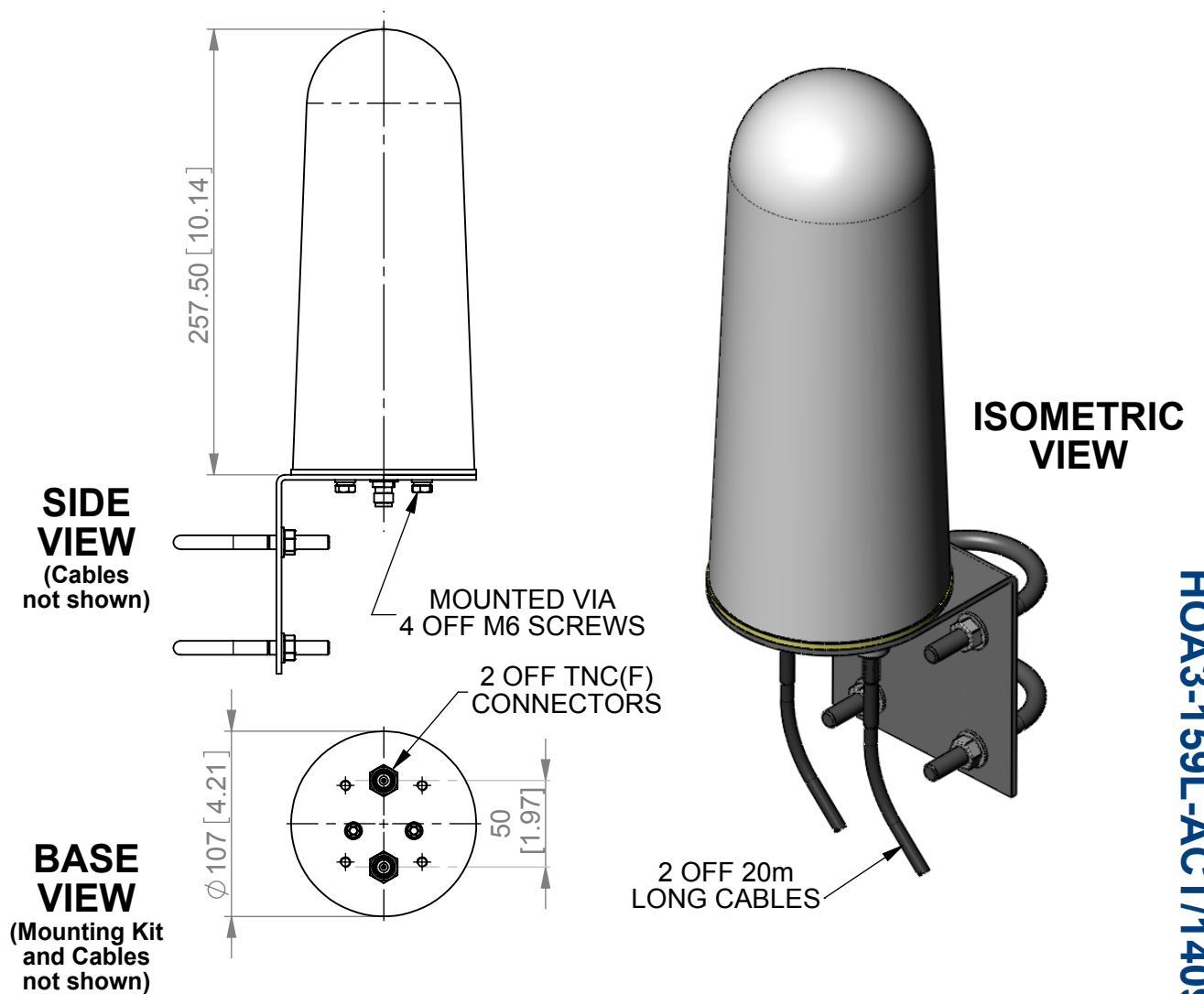
STANDARD FINISH:	White
MASS:	1.10 Kg / 2.4 lbs ex. mount. kit
TEMPERATURE:	-20° to +55°C
WIND LOADING:	3.7 Kg / 8.1 lbs @ 100 mph

MOUNTING OPTIONS

KITS AVAILABLE: 155A (shown)

See Separate Data Sheets

GA: 1409-B Issued: 250108
DIMENSIONS: mm [inches] M



HOA3-159L-ACT/1409

European Antennas Ltd. has a policy of continuous development and therefore stress that the data contained on this sheet should be used for guidance only.

European Antennas Ltd. is part of the Cobham Antennas Division



Certificate No 9268

European Antennas Ltd
Lambda House, Cheveley
Newmarket, Suffolk, CB8 9RG, UK
Tel: +44 (0)1638 731888
sales@european-antennas.co.uk
www.european-antennas.co.uk