



Iridium Data with Macintosh

(version 2.0)

Table of Contents

1. Iridium Data introduction.....	3
2. Configuration	4
- The Modem control panel	4
- The Remote Access control panel.....	5
- The TCP/IP control panel.....	7
- More information about configuration	8
3. Emailprograms	9
- Netscape Messenger.....	9
<u>How do I install Netscape Messenger?</u>	9
- Step I.....	9
- Step II	9
<u>How do I configure Netscape Messenger?</u>	10
- Step I.....	10
- Step II	10
- Outlook Express	13
<u>How do I install Outlook Express?</u>	13
- Step I.....	13
- Step II.....	13
<u>How do I configure Outlook Express the first time?</u>	14
- Step I.....	14
- Step II.....	14
- Step III.....	14
- Step IV	15

1. Iridium Data introduction

Thank you for your inquiry to Iridium Satellite LLC. Yes, you are correct. All of our data capable phones are Hayes compatible and accept AT commands as a typical modem will. Please be aware that our Direct Internet Data service will only work on Windows platforms, but if you are able to transmit AT commands through a MAC, UNIX, or LINUX machine that you would be able to utilize our Dial-up Data service at 2.4 kbps. Though technically it is possible, these types of applications are **not supported** by GloCall BV or Iridium.

If you need some more info about At Commands please contact support@glocall.com

2. Configuration

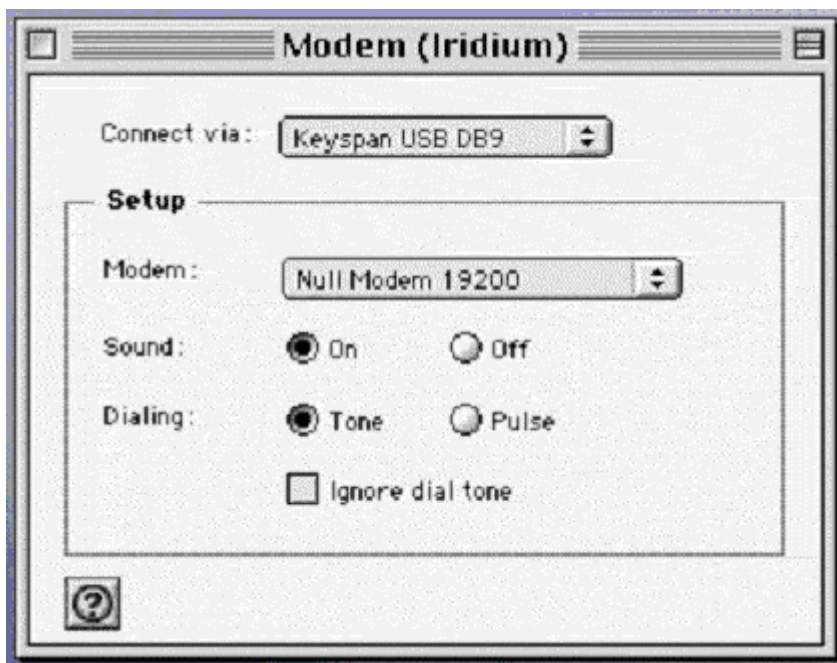
1. Assuming that the mac has USB connection ports then you will need a USB to serial adapter. We have used a Keyspan USA-19 serial assistant. in order to make this work you need a driver which can be down loaded from www.Keyspan.com (if you are using OS 9.0 and above just plugging the adapter in will cause a msg to appear that **“this is an unknown USD device, do you wish to search for a driver on the internet”**. Answer **YES** and if you are connected to the web it will get it automatically for you)
2. The following is based on using that adapter.
3. This adapter then needs to be connected via a 9 pin serial cable to the Iridium modem, which in turn needs to be connected to the phone.
4. This needs to be data enabled and switched on.
5. Assuming that you have standard dial up facilities to an ISP then you need to configure as follows.

- ***The Modem control panel.***

Open Modem control panel and from **File** make a duplicate configuration active. Rename this **"Iridium"**. On a normal setup you would have two **"Connect via"** options - **"Internal Modem"** and **"Infrared port"**. With the Keyspan 19 inserted you should also see **"Keyspan USP DB9"** in the **"Connect Via"** options dropdown menu. Select this. (If you do not, check the control panel to see if the **Keyspan software** has been activated – if you are running on on base OS settings it will not be active).

Assuming it is activated then in the drop down menu **"Modem"** select **"Null Modem 19200"**. Settings for sound should be on, dialling – irrelevant, but check **“Tone”** anyway, and leave **"Ignore Dial Tone"** unchecked.

Save these settings.



- **The Remote Access control panel**

Open the Remote Access control panel and from **File** make a duplicate configuration active. Rename this "Iridium".

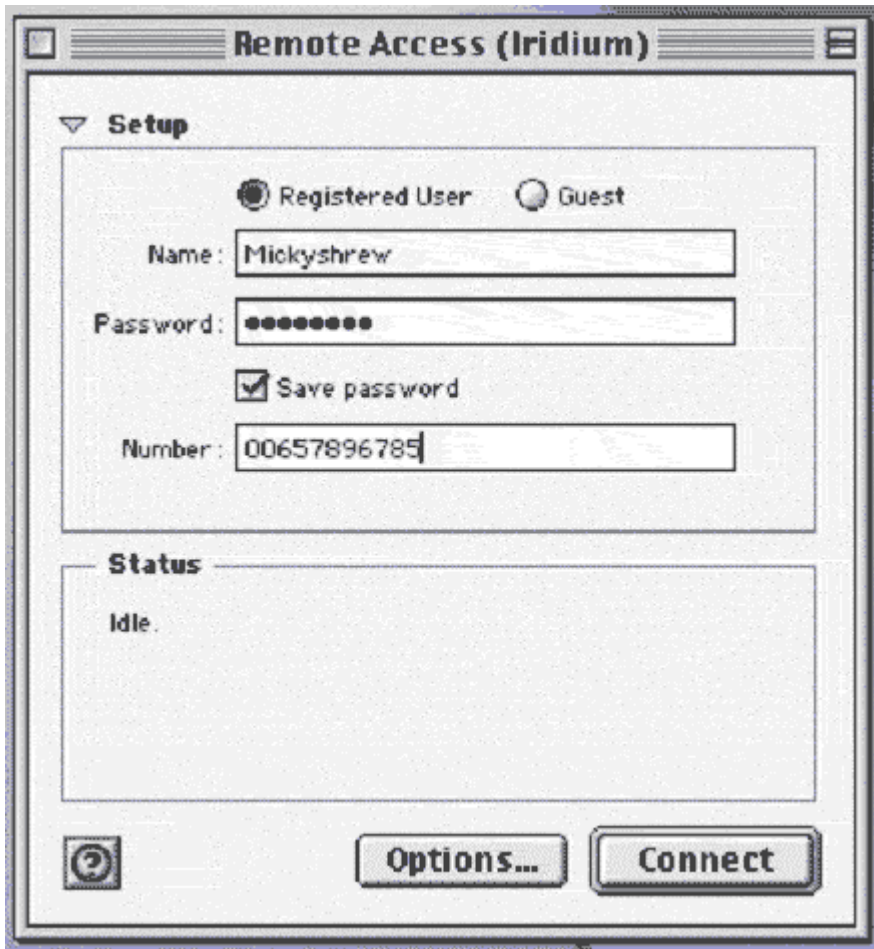
On the open dialog box you see three fields to fill in:

Name

Password

Number

In the first two put whatever are the settings you normally put in to dial up your ISP. Put your ISP dial up number in the Number field, but you only need to do this for reference.



Then click the **Options** button on the bottom of the box, this takes you to the options page:

Click "**Protocol**"

There are four check box's

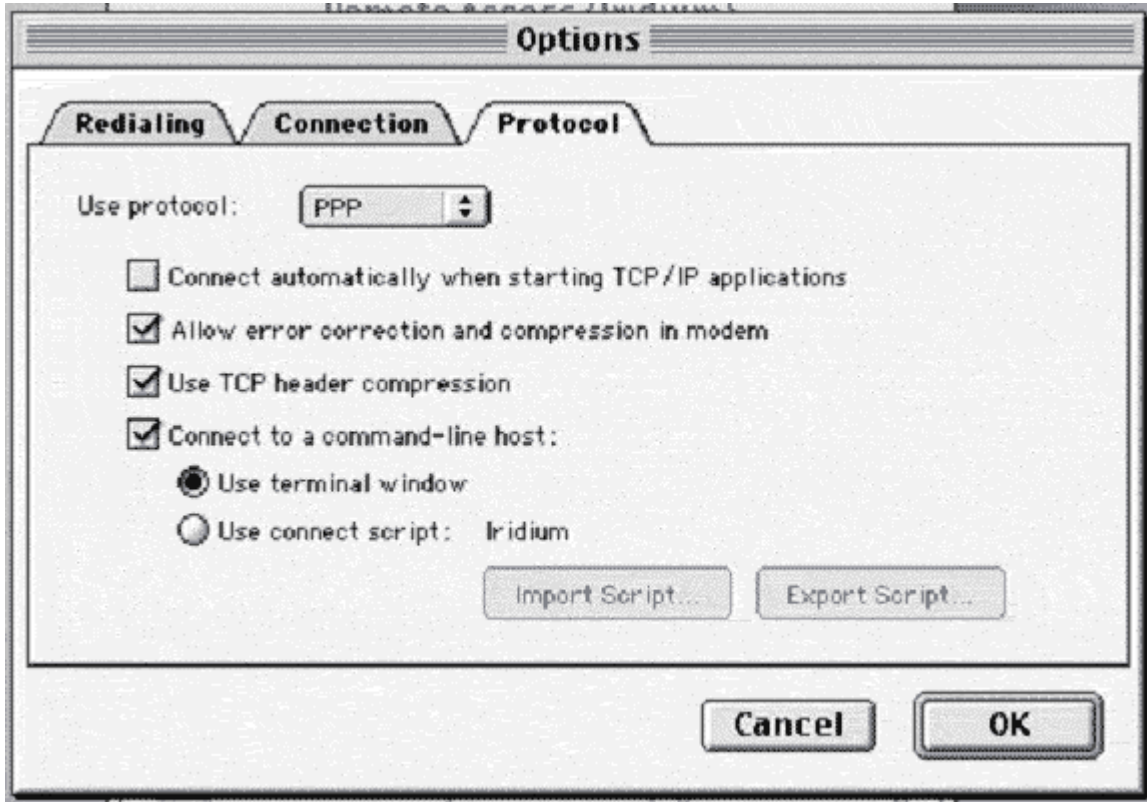
- Connect Automatically when starting TCP/IP applications
- Allow error correction and compression in modem
- Use TCP Header compression
- Connect to a command line host

The first one is your preference, but I have left it unchecked to avoid inadvertent start up.

Check the next **three**.

Check the “**Use Terminal Window**” radio button.

Click the **OK** button



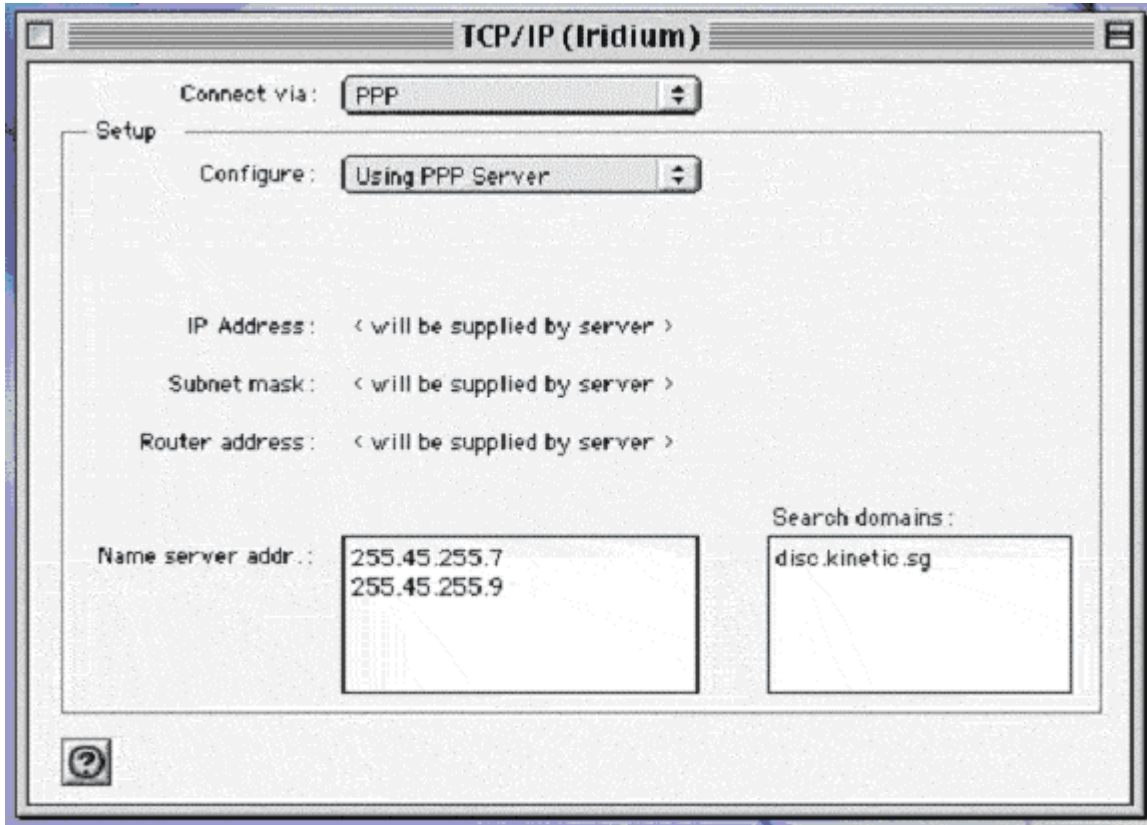
This takes you back to the main dialog box.

Leave this open

- **The TCP/IP control panel**

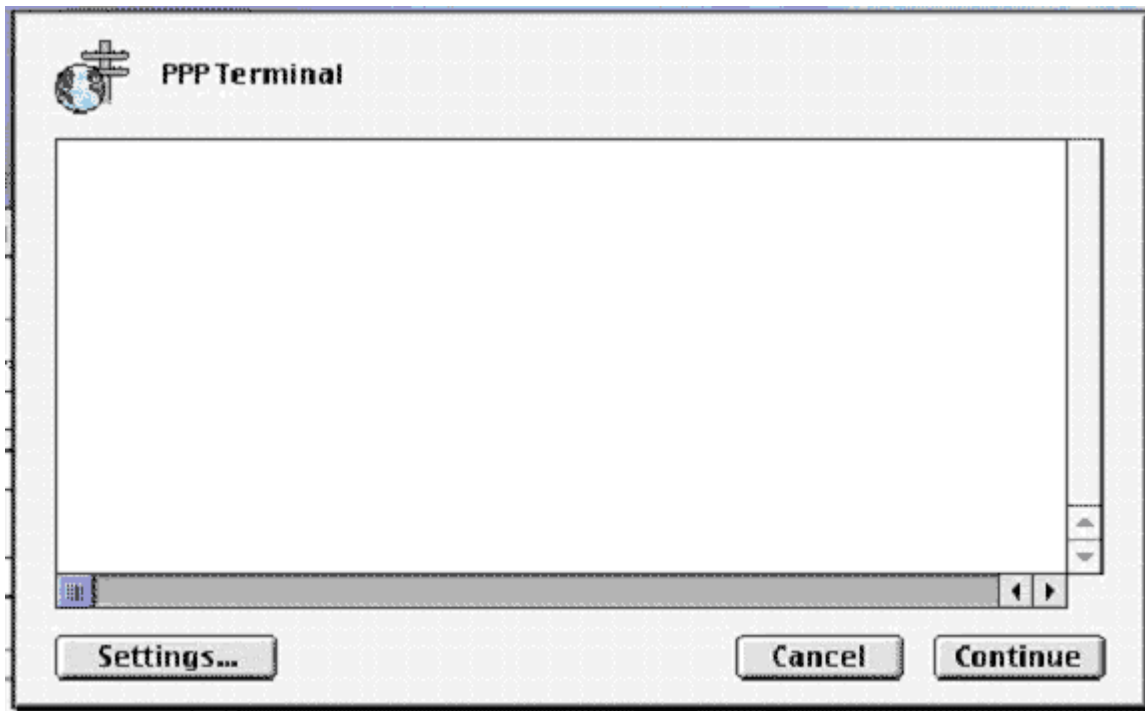
Open TCP/IP control panel and from **File** make a duplicate configuration active of the ISP settings but do not change settings from that you would normally use for your ISP. Rename this "**Iridium**"

Save these settings.



Go back to the Remote Access dialog box and click the "**Connect**" button.

This will bring up a **Terminal PPP dialog box**.



1. Type in **AT** and Return <checks connection>
Should get **OK** if the settings and connections are okay.
2. Type **AT&F** and Return <resets any previous commands which did not leave the modem in its normal state>
Should get **OK**
Type in **ATDT** <ISP Dial-UP number>, which should include the full international dialling string and Return.
If successful and when connected you will see a msg "**Connect 19200**"
3. Then click the "**Continue**" button. It will ask you if you want to save the script, click cancel (see below).
4. This will return you to the main dialog page where you will see in the status box "**Starting PPP**", then "**Authenticating**", then "**Starting Network Protocols**" and finally the normal connect information. Except that it does not give the baud rate. Which I believe is because it gets that from internal modem and of course in this case its external.

- **More information about configuration**

- Mail can then be started as normal.
- You can test the system by first plugging in your home number, if it rings then there is no reason why it should not work on your ISP provider
- The whole process can be automated by using a connect script. To do this, after entering for the first time the above modem command scripts click "**continue**" save the script. Then on subsequent connections reset the "**Protocol**" page by instead of checking the radio button "**Use Terminal Window**" check "**Use connect script**" and follow the instructions to import the previously saved script.
- Finally if you use the Apple Location Manager this can then be set up with an "**Iridium**" Location reflecting the three control panel settings.
- Many older macs with no USB slots had two possibilities for modems. The modem card slot at the side, which took a modem card or the round pin Modem/Printer port at the back. This slot must be used to connect to the Iridium modem via a mac round pin – PC 9 pin Printer/serial cable adapter.

When this is connected you will see two choices in the "**Connect via**" dropdown box. Choose "**Modem/Printer Port**", the other settings are same.

I do know that the only difference with the above on a old 190 powerbook is that the control panel "Remote Access" is called "PPP" in operating systems up to and including OS 8.0.

3. Emailprograms

- ***Netscape Messenger***

Netscape Messenger is the e-mail component of the Netscape Communicator software program. It allows you to store and manage e-mail on your computer. It is capable of managing more than one e-mail account by using more than one user profile.

What do I need to get started?

- Your account from your ISP
- Your password from ISP
- A personal computer
- MacOS software
- A working connection to the internet via Iridium phone

Please note that this handout uses screen pictures from MacOS 8.6

How do I install Netscape Messenger?

Netscape Messenger is installed with Netscape Communicator. If you do not have Netscape Messenger on your computer and you wish to use it, then you will need to download the most recent version of Netscape Communicator.

- Step I

Download the installation program:

- Establish your internet connection (see your Mac Internet Dial-Up Connection packet or your Mac Ethernet Connection packet for further information)
- Start your web browser
- Type <http://www.netscape.com/> in your browser's Netsite or Goto or Location or Address box and then press <enter>
- Click on the Download icon
- Find the Mac PowerPC link and click on it
- Download the file to your desktop
- When the download is finished, close all of the software programs that you are running

- Step II

Install Netscape Communicator:


- Find the downloaded file on your desktop and double-click on it
- Read and answer the questions through the Typical install process

How do I configure Netscape Messenger?

The first time that you run Netscape Communicator, you will need to configure it for use with your GloCall e-mail account. You will need to re-establish your internet connection first.

- Step I

Start Netscape Navigator by doing one of the following:

- Click on the  then select Netscape Communicator
- Double-click on the Netscape Communicator icon on your desktop

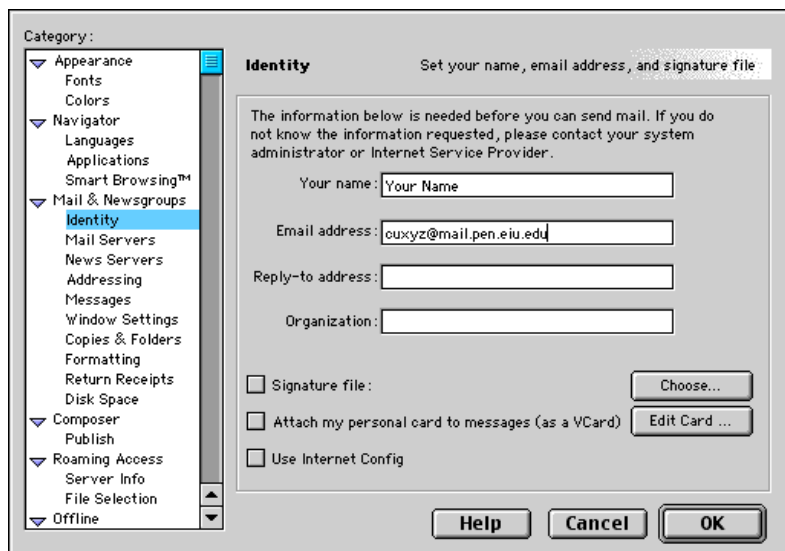
- Step II

Select **Edit**, then select **Preferences**

Click on **Identity**

Fill in the information:

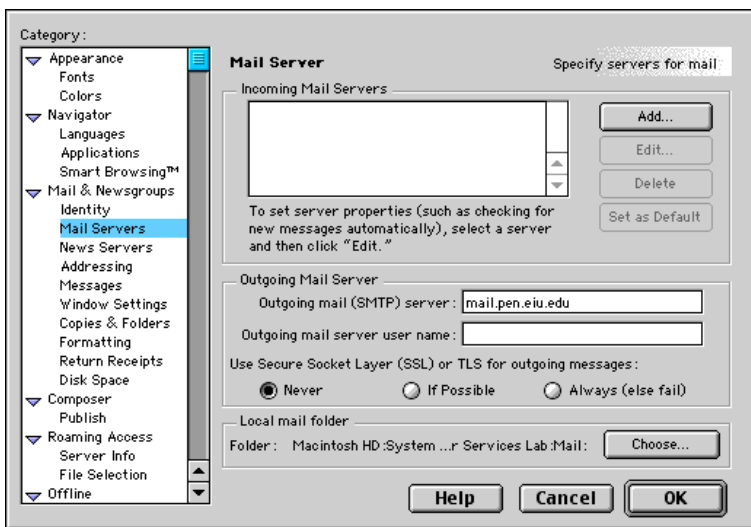
- Type your name in the Your Name box
- Type your e-mail address in the Email address box (for example: username@domain.com)
- You can leave the Reply-to address box blank
- You can either leave the Organization box blank or fill in with **GloCall - Iridium**
- You can create your own signature file and link to it by clicking the Signature File box then clicking the Choose button to browse to and choose your signature file



Click on **Mail Servers**

Fill in the Outgoing Mail Server section starting with the Outgoing mail (SMTP) server:

- If you live in a networked residence hall and have set up your ethernet connection, type {mail.domain.com}
- If you dial in to your ISP to make your internet connection, type **SMTP Server**
- If you dial in to an area Internet Service Provider (ISP), type in their SMTP server name



Leave the Outgoing mail server user name box blank

Choose Never for Use Secure Socket Layer (SSL) or TLS for outgoing messages

Click on the **Add** button in the “Incoming Mail Servers” section.



Fill in the **General** tab entries

- Type **SMTP Server** in the Server Name box
- Choose **POP Server** in the Server Type box
- Type your username/login (e.g. username) in the User Name box
- If you check “Remember password”, then anyone with access to your computer can download your new e-mail
- If you check “Check for mail every 10 minutes”, then Netscape will check for new mail every 10 minutes and notify you if you have any as long as Netscape is running and you are connected to the internet
- If you check “Automatically download any new messages”, then your new e-mail messages will automatically be downloaded from the server to your machine as long as Netscape is running and you are connected to the internet

Fill in the **POP tab** entries, then click the **OK** button

- Only check the Leave messages on server box if you would like to keep copies of your e-mail on the server so that you can access those messages from other software BUT remember that you have 1 mb quota on your inbox
- **CAUTION:** If you choose to Leave messages on server, we highly recommend that you also check Delete messages on server when deleted locally to help keep your inbox on the server from going over the 1 mb quota



You have completed the basic configuration of Netscape Messenger and are now ready to explore its features

- **Outlook Express**

Outlook Express is the e-mail software that comes with newer versions of Internet Explorer. It allows you to store and manage e-mail on your computer. Outlook Express is capable of managing more than one e-mail account, including Hotmail in version 5. One concern with Outlook Express is that many e-mail viruses/worms target vulnerabilities in this software.

What do I need to get started?

- Your account with your ISP
- Your password with your ISP
- A personal computer
- MacOS software
- A working connection to the internet via Iridium phone

Please note that this handout uses screen pictures from MacOS 8.6.

How do I install Outlook Express?

Outlook Express is installed with Internet Explorer. If you do not have Outlook Express on your computer and you wish to use it, then you will need to download the most recent version of Internet Explorer.

- **Step I**

Download the installation program:

- Establish your internet connection (see your Mac Dial-Up Connection packet or your Mac Ethernet Connection packet for further information)
- Start your web browser
- Type <http://www.microsoft.com/> in your browser's Netsite or Goto or Location or Address box and then press <enter>
- Click on Downloads in the menu bar
- Choose Internet Explorer 5 Macintosh Edition in the Product Name box and Macintosh in the Operating System box then click on the Find It! button
- Follow the rest of the instructions to download the file to your desktop
- When the download is finished, close all of the software programs that you are running

- **Step II**

Install Outlook Express:

- Find the downloaded file on your desktop and double-click on it
- Read and answer the questions through the install process

How do I configure Outlook Express the first time?

The first time that you run Outlook Express, you will need to configure it for use with your GloCall e-mail account. You will need to re-establish your internet connection first.

- Step I

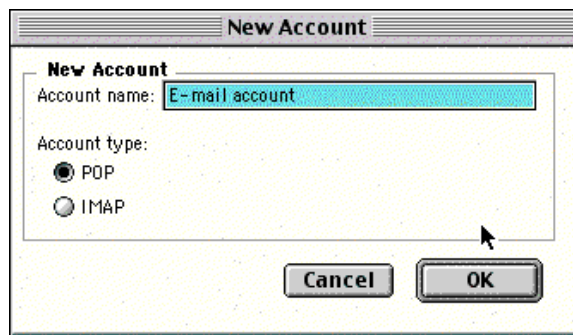
Start Outlook Express by doing one of the following:

- Click on the then select Outlook Express
- Double-click on the Outlook Express icon on your desktop

If this is not the first time you have run Outlook Express, click the Preferences button and skip to Step IV

- Step II

The first time that you run Outlook Express, you will need to type in an “**Account name**” for your information, choose **POP** for the Account type, and then click the “**OK**” button



- Step III

Fill in the in information:

Type your name in the **Full name** box

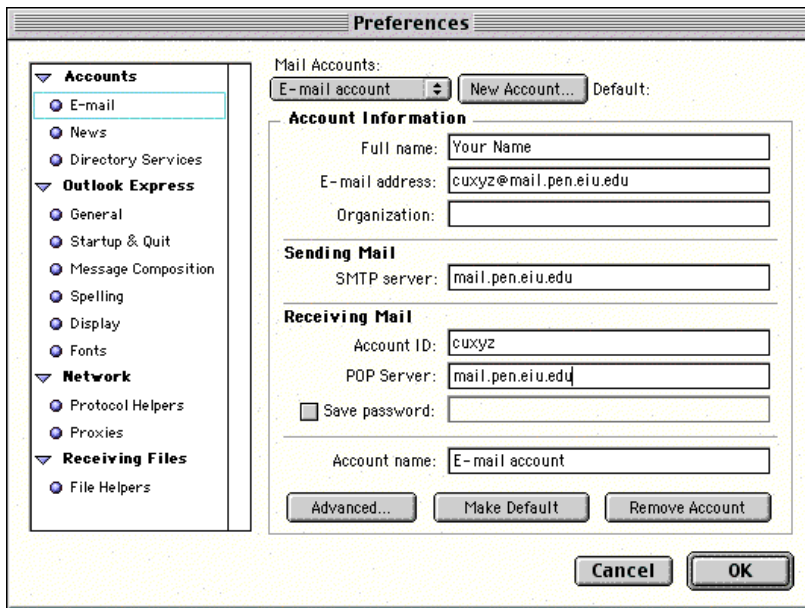
Type your **e-mail address** in the E-mail address box

You can either leave the **Organization** box blank or fill in with GloCall - Iridium

Fill in the SMTP server box based on the following information:

- If you dial in to your ISP to make your internet connection, type **SMTP server** of your ISP
- If you dial in to an area Internet Service Provider (ISP), type in their **SMTP server name**

Type your ISP username/login in the Account ID box and **SMTP Server** in the POP Server box



- Step IV

Click the **Advanced** button to open the Advanced box

- Only check the Leave a copy of messages on server option only if you would like to keep copies of your e-mail on the server so that you can access those messages from other software BUT remember that you have a 1 mb quota on your inbox.
- **CAUTION:** If you choose to Leave a copy of messages on server, you will have to delete some of your e-mail messages from the server periodically to keep your inbox from going over the 1 mb quota

Click the OK button, then click the next OK button.

You are now ready to explore the features of Outlook Express.