

CAT® S60

WITH INTEGRATED THERMAL IMAGING

POWERED BY **FLIR**



CAT® S60

WITH INTEGRATED THERMAL IMAGING

POWERED BY **FLIR**



TECHNICAL SPECIFICATIONS

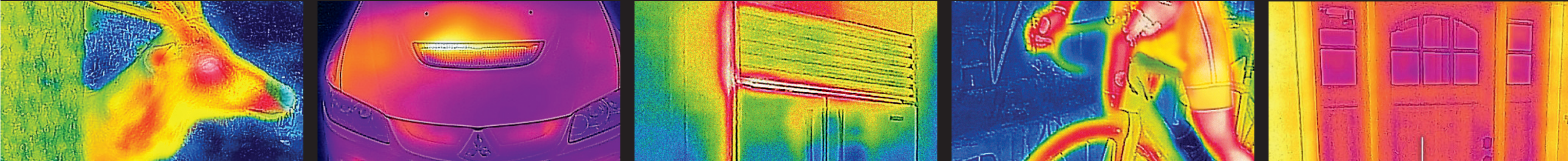
Form Factor	Bar Type	
Band	EU SKU	LTE CAT 4 Band 1/3/7/8/20
	(BT52/DS)	HSDPA/WCDMA Band 850/900/2100
		GSM/GPRS/EDGE Quad-Band 850/900/1800/1900
	US SKU	LTE CAT 4 Band 2/4/5/7/12/17 (MFBI 12/17)
	(BT53/SS)	HSDPA/WCDMA Band 850/1900/AWS w/diversity
		GSM/GPRS/EDGE Quad-Band 850/900/1800/1900
Platform	Qualcomm MSM8952-3 4x1.5GHz + 4x1.2GHz	
OS	Google Android™ Marshmallow	
Dimensions	73.4 x 147.9 x 12.95mm	
Display	4.7" HD, a-Si AHVA, direct bonding, Gorilla® 4, Capacitive Multi-Touch, Wet Finger/Glove auto switch support, Sunlight readability (typ. 500/min. 450 nits), AF coating (anti-finger print)	
Camera	Main 13M AF + Thermal Camera w. Dual LED Flash + Front 5M AF	
Connectivity	GPS/aGPS/Glonass/Beidou, Stereo BT4.1, 802.11 b/g/n (2.4G), NFC (paring/sharing/payment-google wallet), OTG, FM Radio	
Memory	32GB ROM / 3 GB RAM	
I/O	Waterproof Micro-USB 2.0 w/ bung, Nano SIM (4FF), 3.5mm audio Jack , Micro SD (up to 128GB)	
Sensor	P + L Sensor, G-Sensor, E-compass, Barometer, Altimeter, Water detect function	
Audio	1 x loud speaker (front facing and waterproof, Smart Amp), 2 x MIC, 1 x receiver (6x15, waterproof) ,Vibrator	
Hard Key (Dome keys)	Side: power key, volume down/up, programmable key, Front : Home, back, Recent App	
Battery	3800mAh, Quick Charge 2.0	
Other	Dual SIM (EU), LED notification (3 colors), Waterproof (underwater 5M/1hour - ME design), 1.8M drop, MIL-STD-810G, Appland, AVG, Swiftkey, Redbend, Tweaker, Office Suite, SD/File Manager, Lucid, Zello PTT support, HAC M3/T3, TTY, WEA/CMAS, LBS, MDM-AFW	



© 2016 Caterpillar. All Rights Reserved. CAT, CATERPILLAR, BUILT FOR IT, their respective logos, "Caterpillar Yellow", the "Power Edge" trade dress as well as corporate and product identity used herein, are trademarks of Caterpillar and may not be used without permission. Bullitt Mobile Ltd is a licensee of Caterpillar Inc.

catphones.com

BUILT FOR IT.™



CAT® S60

WITH INTEGRATED THERMAL IMAGING

POWERED BY **FLIR**

FEATURE HIGHLIGHTS:

THERMAL CAMERA

Displays a live thermal image, measures surface temperatures and can capture both still images and video. Plus see through obscurants such as smoke.

WATERPROOF TO DEPTHS OF 5M FOR 1 HOUR

Further pushing the boundaries of mobile technology this smartphone can also capture still images and video underwater.

EXTREMELY TOUGH AND ROBUST

Exceeds military spec, is built to withstand drops onto concrete from up to 1.8M.

SUPER-BRIGHT DISPLAY

Can be viewed outside in bright sunlight.

WET FINGER & GLOVE-ON WORKING TECHNOLOGY

It is also protected by the latest Corning® Gorilla® Glass 4.

CAT® S60 SPECIFICATIONS:

- Strengthened die cast frame
- Drop proof to 1.8M, MIL Spec 810G
- Super bright display (typical 540 nits), Gorilla Glass 4
- 4.7" HD capacitive multi-touch with auto wet finger & glove support
- Optimised battery performance (3800mAh)
- High quality audio experience (>105dB)
- Underwater 13MP main camera with dual flash, 5MP front-facing camera
- 4G LTE
- Snapdragon Octa-core processor
- 32GB ROM, 3GB RAM
- Android™ Marshmallow



THERMAL IMAGING
Fully Integrated



MOST WATERPROOF
to 5M for 1 Hour

catphones.com

BUILT FOR IT.™