



FLIR ONE®

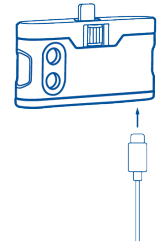
QUICK START GUIDE
Third Generation
For Android and iOS

FLIR ONE QUICK START GUIDE

⚡ STEP 1

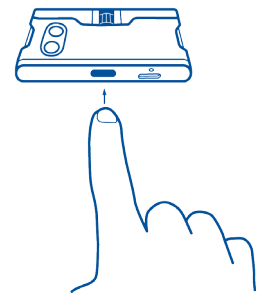
Charge the FLIR ONE with the included USB-C power cable connected to a 1A power source. The Charge Indicator LED next to the USB-C connection blinks on and off while the FLIR ONE is charging and stays on continuously when it is fully charged. It will take about an hour to completely charge your FLIR ONE. Ensure the FLIR ONE is fully charged before using it the first time.

Note: The power cable for the iPhone (with a Lightning connector) will not work to charge the FLIR ONE iOS model.



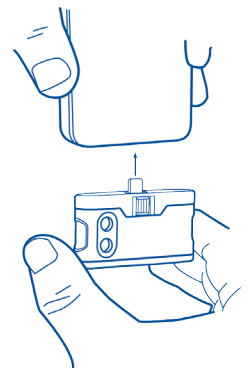
⬇️ STEP 2

Download and install the FLIR ONE app, which is available on the Apple App Store and Google Play Store. When you start the FLIR ONE app, the first-time User Guide will help you get started with the FLIR ONE.



⏻ STEP 3

Press the power button on the bottom of the FLIR ONE to turn it on. The indicator light will turn orange. It will flash green when the device is ready. If needed, adjust the blue dial of the OneFit™ and extend the connector to the appropriate length to fit through your smartphone's protective case. Connect the FLIR ONE to your smartphone and start the FLIR ONE app. You will be asked to create a user account with your email address and a password.



🏠 STEP 4

Check out the app's Home screen to access your gallery, get the latest Tips & Tricks for using your FLIR ONE, share your photos and videos with the FLIR ONE community, and stay up to date with all the latest news and promotions from FLIR.

📷 STEP 5

Explore all the Camera features on the FLIR ONE.

COLOR PALETTES

- Tap on the Features icon in the bottom right of the screen
- Choose between 9 different color palettes

SPOT METER

- Tap on the Spot Meter icon in the top left corner to get exact temperature measurement on the center of the screen

TIMER

- Set a timer for 3 or 5 seconds

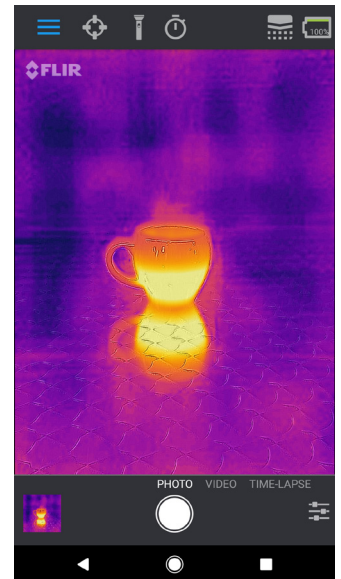
CHANGE CAMERA MODES

- Select Video, Photo or Time Lapse

MSX® PARALLAX

- The image that displays in the app is a combination of a thermal image and a visible-light image through a unique process called FLIR MSX. The FLIR ONE thermal camera can produce an image even in total darkness. When visible light is available, the FLIR ONE visible-light camera is used to enhance the detail of the FLIR ONE thermal camera.
- When looking at an image up close or far away, you can adjust the MSX alignment for the object to align the thermal and visible-light images. Tap on the features button on the bottom right corner, tap MSX Distance, and adjust as needed.

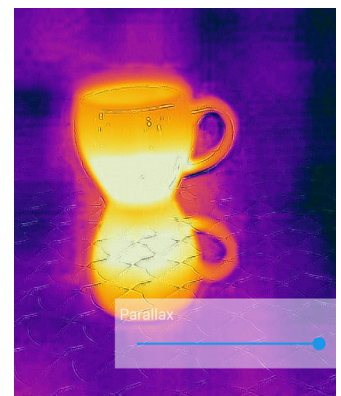
MODE SCREEN



MSX DISTANCE SLIDER



ALIGNED



WARNING

The FLIR ONE and FLIR ONE Pro are not waterproof. Use caution if the FLIR ONE or FLIR ONE Pro are used to observe very hot objects like fire or molten metal.